



Corporate Brochure

KOKUSAI PULP & PAPER CO., LTD.

KOKUSAI PULP & PAPER CO., LTD.

“A Paper Trail for Creating the Future”

The origins of the written letter or character can be traced back to the fourth millennium BC. Linguistic communication saw the addition of writing, then paper was invented, and later printing techniques were developed. Letterpress printing in particular made major contributions to Europe’s Renaissance and Reformation, as well as to the scientific revolution. Paper, along with written letters/characters and movable type, can be considered a monumental innovator that has supported the advancement of humanity. Paper is what will now show the way to new future for us as we work to preserve our rich natural environment. To use this eco-friendly product, paper—this is what it means to create the future.

Afan Woodland, full of biodiversity
©Afan Woodland Trust

KPP GROUP WAY



Entering a New Era as a Totally Recycling-Oriented Enterprise



Madoka Tanabe
Director of the Board
Chairman & Chief Executive Officer

Tadashi Kurihara
Director of the Board
President & Executive Officer

Kokusai Pulp & Paper Co., Ltd. has been growing since its establishment in 1924. Today, KPP is a general trading company engaged in the wholesale of printing and communication paper, boxboard, containerboard, and packaging paper, and it also offers a wide range of other paper-based products. The 21st century, however, has seen diversification in information media driven by the advances in internet and device technologies. In addition, remote work is taking root recently, due to the effort to fight the COVID-19 pandemic and ongoing work-style reforms. These trends are accelerating the shift toward a paperless world and are certainly also a factor in today’s decreasing demand for paper.

On the other hand, the proliferation of online shopping has boosted demand for containerboard, and the very existence of “paper,” which is a biomass resource, is being reevaluated as a material for combating climate change and marine pollution due to environmental destruction. The main raw material for paper is wood chips, and most of the wood chips come from managed plantation timber. Thinned wood, which is thinned out in order to grow healthy forests, is also used as a raw material for paper. In addition, used paper is recycled and reused as a raw material for paper. Trees are also environmental superstars, absorbing carbon dioxide, the main factor in global warming, and providing oxygen to the atmosphere through photosynthesis.

Graphic paper is facing a downward trend in demand. In contrast, packaging paper has grown steadily, driven by home delivery demand and environmental issues, and demand for sanitary paper has also increased steadily, driven by awareness of hygiene due to infectious diseases, buoying the global paper and paperboard market. At the KPP Group, we are focused on post-paper businesses and global markets. Responding strategically to the shift in the leading role of paper and paperboard and the slowdown of demand in Japan, we are working to strengthen our business portfolio by pursuing mergers and acquisitions outside Japan.

The “plus one” in our “GIFT +1” management vision stands for “building a sustainable world” by delivering strong ESG performance. Leveraging our strengths in recovered paper collection and product sales, we will continue to develop our material recycling business — one of the biggest in Japan — to firmly consolidate our position as a totally recycling-oriented enterprise.

Excessive digitization could undermine human sensibilities and deprive people of communication skills, and we consider it necessary to sound a warning against the emergence of a cold world dominated only by AI. Going forward, the KPP Group will contribute to society by developing our business as a member of an industry that supports an abundant spiritual life and helps to conserve the global environment, thereby living up to our slogans, “Paper Expands Knowledge” and “A Paper Trail for Creating the Future.”

We look forward to your continued support in the future.

Future-bound with Paper

Kokusai Pulp & Paper Co., Ltd. was established in 1924. With our sights set on meeting the needs of every era, we have continuously contributed to cultural development. Today, as we pursue diverse possibilities, we aim to create new businesses.



Opening reception



Kyushu Branch Office at the time



1930 newspaper advertisement (Property of The University Museum, University of Tokyo)



Prewar Shanghai Local Office (Closed at the end of war)

1920

- Nov. 1924 Daido Yoshiten Ltd. established with ¥2 million (JPY) capital
Head Office: Osaka
Branch Offices: Kyoto, Nagoya, Tokyo
- Jan. 1926 Kyushu Branch Office opened

Constitution of Japan promulgated (1946)
Constitution of Japan effectuated (1947)

1940-50

- Jun. 1948 Sapporo Sub-Branch Office opened
- Jan. 1956 Singapore Representative Office opened

1960

- May 1968 Sapporo Sub-Branch Office promoted to Branch Office
- Sept. 1968 Head Office relocated to Tokyo
- Oct. 1969 Melbourne Representative Office opened



Tokyo Branch Office signboard of the time

Osaka Expo (1970)
Sapporo Winter Olympics (1972)
First Oil Crisis (1973)

1970

- Apr. 1970 Jakarta Representative Office opened
- Apr. 1971 Overseas subsidiary Daido Australasia established
- Jul. 1972 Sendai Liaison Office opened
- Mar. 1973 Merges with Oji Group Trading Co., Ltd. renamed DaiEi Papers Ltd.
Capital increased to ¥800 million (JPY)
- Apr. 1973 Sendai Liaison Office promoted to Sales Office
- Jun. 1973 Sendai Sales Office promoted to Branch Office
- Oct. 1974 Capital increased to ¥1,200 million (JPY)
- Oct. 1975 Merges with Taisei Papers Ltd.
Capital increased to ¥1,320 million (JPY)
- Apr. 1976 Hong Kong Representative Office opened
- Dec. 1976 Overseas subsidiary Tai Wing Papers (H.K.) Ltd. established



Daido company newsletter

1980

- Dec. 1980 Capital increased to ¥1,980 million (JPY)
- Oct. 1981 Beijing Representative Office opened
- Apr. 1982 Capital increased to ¥2,178 million (JPY)
- Jul. 1982 Overseas subsidiary DaiEi Papers (USA) Corp. established
- Apr. 1985 Taipei Representative Office of DaiEi Papers (H.K.) Ltd. opened
- Jun. 1985 Singapore Representative Office promoted to Branch Office

Kansai International Airport opened (1994)
Nagano Winter Olympics (1998)

Joetsu and Tohoku Shinkansen lines opened (1982)
Tsukuba Science Expo (1985)



Inauguration of Kokusai Pulp & Paper Co., Ltd.

1990

- Apr. 1990 Capital increased to ¥2,228 million (JPY)
- Oct. 1991 Kuala Lumpur Representative Office opened
- Aug. 1992 Shanghai Representative Office of DaiEi Papers (H.K.) Ltd. opened
- Apr. 1994 Manila Representative Office opened
- May 1996 Bangkok Representative Office opened
- Apr. 1997 Overseas subsidiary DaiEi Singapore established
- Oct. 1999 Merges with Nichia Co., Ltd., renamed Kokusai Pulp & Paper Co., Ltd.
Capital increased to ¥2,678 million (JPY)



Stock listing notification presentation ceremony

2000

- Apr. 2002 Overseas Division splits off to form company named DaiEi Papers International Corporation
- Apr. 2002 Johannesburg Representative Office opened
- Oct. 2003 New Tokyo Head Office constructed
- Mar. 2006 Seoul Branch Office opened
- May 2006 KPP China established
- Oct. 2006 Merges with Hattori Paper & Board Ltd.
Capital increased to ¥3,192.78 million (JPY)
- Oct. 2007 Merges with Kashiwai Paper Mfg. Co., Ltd.
Capital increased to ¥3,442.78 million (JPY)



Head Office

Great East Japan Earthquake (2011)
Kyushu Shinkansen line fully opened (2011)
Hokuriku Shinkansen line opened (2015)
Hokkaido Shinkansen line opened (2016)
Tokyo 2020 Olympic and Paralympic Games (2021)

2010

- Jan. 2011 Ho Chi Minh Office opened
- Jan. 2013 Merges with Sumisho Paper Co., Ltd.
- Feb. 2013 Overseas subsidiary DaiEi Korea established
- Apr. 2013 Merges with DaiEi Papers International Corporation
- Oct. 2014 Sendai and Sapporo Branch Offices integrated to form new Kita Nihon Branch Office
- Apr. 2015 Osaka Branch Office renamed Kansai Branch Office
Nagoya Branch Office renamed Chubu Branch Office
Kyoto Branch Office integrated with Kansai Branch Office
- Jun. 2015 KPP ASIA-PACIFIC PTE. LTD. established
- Jun. 2018 Listed in the First Section of the Tokyo Stock Exchange
Capital increased to ¥4,723.53 million (JPY)
- Jul. 2019 Acquired major Australian paper firm Spicers Limited as subsidiary
- Mar. 2020 Spicers Limited receives transfer of Direct Paper business
- Jul. 2020 Acquired major French paper firm Antalis S.A.S. as a subsidiary
- Nov. 2020 Spicers Limited acquires Rojo Pacific Pty Ltd.
- Feb. 2021 Spicers Limited receives transfer of Sign & Display business of Blue Print Imaging Limited



Spicers Limited



Antalis S.A.S.

Offering Outstanding Paper-Related Business Solutions

Products

Printing Paper



As a medium for information communication, printing paper is mainly used for newspapers, books, magazines, flyers, catalogues, posters and calendars. Product lineup includes fine-quality papers and coated papers, and we provide a wide range of weights and textures to meet the needs of various applications.

Communication Paper



Communication paper is suitable for recording information, and is mainly used for ledger sheets, delivery slips, and photocopier paper. Products include photocopier paper, carbon-free paper, and thermal paper that develops color with heat.

Paperboard



Main paperboard product categories are base paper for container board and paperboard for paper containers, and these products are widely used in packages. Base paper for container board is the base paper for making paperboard boxes and accounts for approximately 80% of all the paperboard we make. Paperboard for paper containers is mainly used in the paper boxes for confectionary, tissues, and so on.

Packaging Paper



Packaging paper includes paper for heavy packaging used to pack heavy industrial products such as cement, rice, and wheat, and paper for lighter packaging used in general packaging, paper shopping bags, and envelopes. These products have a wide range of applications.



Chemical Products



Flexible packaging films made from polypropylene (PP) and other materials are familiar for their use in a wide range of product packaging because they are strong, lightweight, elastic, suitable for processing, transparent, and has barrier properties. Plastic pallets used for transportation and storage in logistics are stronger, more water-resistant, and more hygienic than wooden ones. Synthetic paper, which is made mainly from synthetic resins (plastics), looks similar to plain paper, but is water-resistant and tear-resistant, and is also used for election posters and ballot papers. We are also working on the development of products made from environmentally friendly biomass-derived plastics.



Paper Raw Materials



Once used, approximately 80% of paper in Japan is collected as recovered paper and delivered to paper manufacturers. Recovered paper is transformed into new paper after being de-inked and bleached. We procure recovered paper through our nationwide network and sell it to paper manufacturers. Pulp for paper manufacturing is made from fibers extracted from wood and other materials, and is used as a raw material for paper.



Functional Paper and Other Products



Functional paper is paper that has been treated with chemicals or other processes to add new functions to ordinary paper. It includes a wide range of paper types and applications, from water-resistant paper, which is impermeable to water, to oil-resistant paper, which is impermeable to oil, to IC tags, which are used in warehouse management and product management.



Green Products

Shift to Paper



Interest has increased in the shift to paper, including the replacement of plastic straws and cups in the restaurant industry and plastic shopping bags in the apparel industry with paper products. Paper materials with barrier properties and other features that can replace plastic film, using water-based coating technologies, meet increasing demand in this area, mainly for food packaging.



Low Volume Plastic



*2

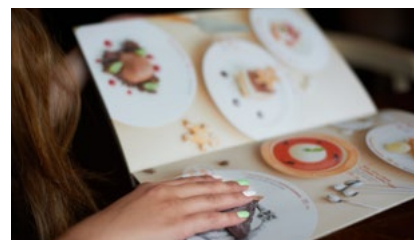
New materials have also been developed that mix plastic raw materials and paper materials and have the functions and properties of plastic despite the main raw material being paper. Featuring low shrinkage and high rigidity and heat resistance, conventional plastic molding equipment can be used for these materials. They also reduce usage of naphtha, the main raw material for plastic. These low volume plastics are attracting so much attention as unique new materials that they can be described as post-plastic raw materials.



Bioplastic



Bioplastic is a general term for biodegradable plastic that is decomposed by microorganisms and biomass plastic that is manufactured using biomass such as plants as the raw material. It can contribute widely to improving diverse problems caused by plastic by taking advantage of its unique characteristics. It has been commercialized for a variety of applications, including plastic carrier bags, menus, and agricultural and civil engineering materials.

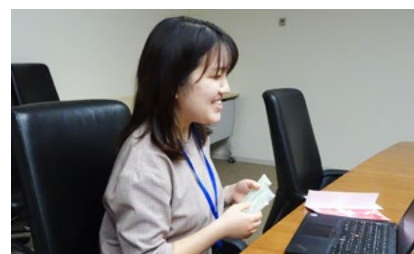


*3

Green Biz Project



The KPP Group has launched the Green Biz Project, which is led by young employees and is promoting company-wide initiatives aimed at distributing and developing environmentally friendly products such as plastic alternatives.



Solutions

Material Recycling



Town ecomobox



Office ecomobox

ecomox

The KPP Group has set out realizing a recycling-oriented society in its Management Philosophy, and the ecomox business typifies this approach. ecomox means "eco" and "to bring" (mottekuru in Japanese) and expresses the idea of "eco + model" (in other words, a new eco model).



ecomox Closed Recycle Service



Dedicated ecomox Closed Recycle Service Website (Available only in Japanese)

Thermal Recycling



There are high hopes for biomass power generation to join the ranks of renewable energy sources alongside solar, wind, and geothermal power. The KPP Group develops and provides support systems for the operation and facility management of biomass power plants. Going forward, we intend to continue increasing convenience using the latest technologies such as AI and IoT.



Dedicated BMecomox website

Web Solutions



<https://www.kpps.jp/papermall/> (Available only in Japanese)

"Papermall" Comprehensive Website on Paper

"Papermall" is a shopping website for the online purchase of paper. The website sells approximately 1,000 types of paper, offers processing services, and disseminates useful information about paper.

"Green Products" Website Featuring Environmentally Friendly Products

We are rolling out our product lineup to match situations in apparel, food, and housing for each type of raw material to address trends such as the shift to paper, low volume plastic, and bioplastic. We will continue working to help build a recycling-oriented society by developing and providing these products.



Striving to Be a Totally Recycling-Oriented Enterprise

The KPP Group is helping to build a more sustainable world by leveraging its recycling-oriented business model and reusing and efficiently utilizing precious resources of the earth. We actively seek to provide solutions for environmental issues.

Responsibly Utilizing Wood Resources

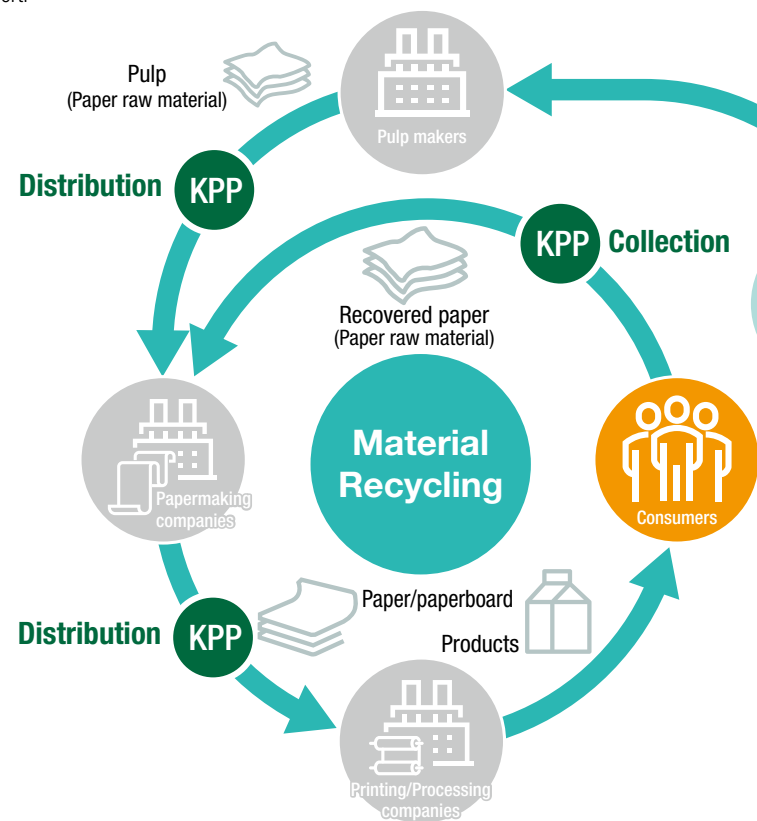
Forest certification systems provide a framework for supporting sustainable management of the world's forests through a combination of appropriate forest management and management of materials and products throughout the entire supply chain from production through distribution. The KPP Group has obtained Chain of Custody (CoC) certification from two leading forest certification organizations, the Forest Stewardship Council (FSC®) and the Program for the Endorsement of Forest Certification Schemes (PEFC), and it is working to proactively expand sales of forest-certified pulp and paper.



FSC (Forest Stewardship Council) certification (Chain of Custody)
Certification acquired Jan. 5, 2004
Effective through Dec. 21, 2023
Certification no. SGSJK-COC-001603



PEFC (Programme for the Endorsement of Forest Certification Schemes) certification (Chain of Custody)
Certification acquired Oct. 1, 2007
Effective through Dec. 21, 2023
Certification no. SGSJP-PCOC-0213



Paper Raw Materials Business

The KPP Group recycles approximately 60% of the products that it sells. We deliver paper and paperboard that have gone into circulation on the market to papermaking companies. We maintain a role in promoting recycling-oriented business models and paper recycling in Japan.



Working to Expand Thermal Recycling

The KPP Group aspires to the realization of a recycling-oriented society with aims such as recycling unused resources and invigorating regional industries through the provision of biomass fuels and the provision of biomass power plant operational support systems utilizing plant IoT technology.



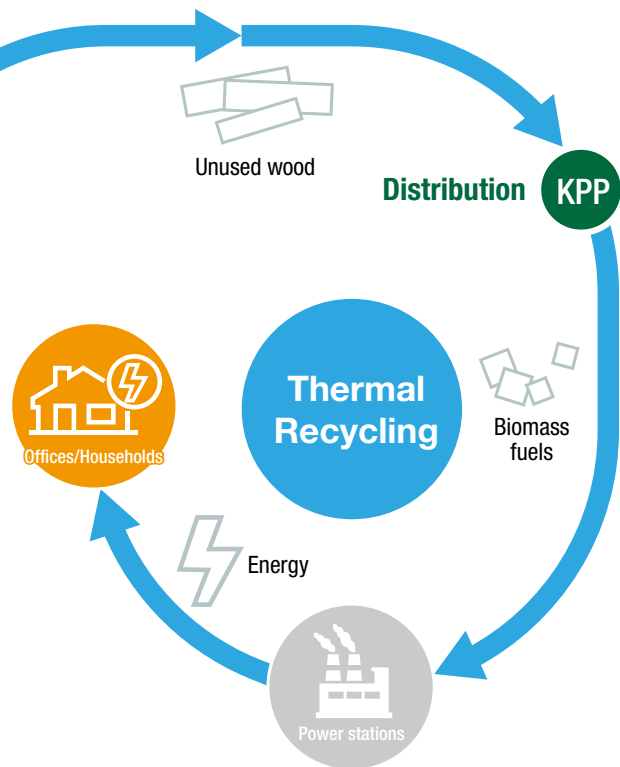
Broadening Recycling with “ecom”

The KPP Group Uses the “ecom” Model of Recovered Paper Collection.

Town ecom
Town ecom is a framework for collecting paper waste generated by residential households and recycling it. Dedicated collection boxes are set up in supermarkets and other retail locations. Paper such as old newspapers and magazines brought in from the home by shoppers may earn points for them to use at the store in accordance with the weight of the paper.

Office ecom
With the aim of providing safe, reliable recycling of confidential documents in the office environment, dedicated collection boxes are set up to provide collection of the documents, always with security in mind.

ecom Closed Recycle Service
The ecom Closed Recycle Service provides centralized management of paper supply and recovered paper collection which supports the achievement of a recycling loop in the resource circulation of customers as well as the visualization of the recycling loop.



Town ecom



Office ecom

Striving to Be a Truly Valuable Company

The KPP Group engages in its business activities with a determination to build a prosperous future by coexisting harmoniously with society. Achieving this requires the trust of all our stakeholders, including not only customers but also shareholders, investors, suppliers, local communities, and employees and their families. The KPP Group aims to be a company of true value, and we take diverse initiatives to earn the trust of stakeholders.

Environmental Contributions

Making environmental contributions to reduce our environmental footprint, aiming to conserve forests and help build a society with low carbon emissions



The Headquarters Rooftop Greenspace

Converted into a greenspace in 2010, the rooftop includes a garden where employee volunteers grow fruits and vegetables throughout the year, providing a space for communication.



Support for Forest Conservation Efforts

We offer our endorsement and support for the efforts of the C.W. Nicol Afan Woodland Trust, a general incorporated association in Japan, to promote forest conservation as well as to nurture people's spirits through forest appreciation.

Diversity

Developing human resources at KPP and maintaining a work environment that enables employees to enjoy fulfillment in life through their work



Education and Training

Through advancing efforts to further promote diversity in human resources, including the promotion of women to executive positions and continued hiring of foreign students and securing to hire industry-ready mid-career professionals, KPP seeks increased value as a global corporation.



Training in fiscal 2019

Welfare Program

A facility and activities that position “Humans” as a vital asset

Dormitory for singles, welfare facilities, sabbatical leave, visits with industry physician, etc.



The Kiso-Koma Mountain Villa welfare facility



Karuizawa-ryo welfare facility

(scheduled for completion in July 2022)



Governance

Striving to practice highly transparent management and enhance flexibility

In order to live up to the duties expected of us by stakeholders—from shareholders to clients, suppliers, local communities and employees—as well as to realize sustainable growth and increased medium- to long-term corporate value with a basis in ESG management, the KPP Group considers the construction and continuous strengthening of corporate governance to be serious management concerns.

The major undertakings of our corporate governance code

To improve the functioning of the Board of Directors and ensure a higher level of effectiveness, the effectiveness of the Board of Directors is evaluated and analyzed every year. The issues identified as a result of the evaluation are shared with the Board of Directors, which deliberates on the details and strives to make improvements. Moreover, in May 2021, the Company established the Nomination Committee and the Compensation Committee in order to strengthen the fairness, transparency, and objectivity of the decision-making process on the nomination and compensation of directors.

Social Contributions

Contributing to society by improving the understanding of employees' families about their workplaces and holding classes where people can experience making *washi* Japanese paper



Sendai Tanabata Decorations Displayed at the Entrance to the Head Office

Plans are in place to begin interacting with kindergartens and nursery schools near the Head Office.

Hands-On Learning at the Elementary School in Miyagi Prefecture

A washi paper-making project we co-sponsored with the C.W. Nicol Afan Woodland Trust at Miyanomori Elementary School in Higashi-Matsushima City, Miyagi Prefecture



Family Day

Seeking to encourage a better understanding of workplace operations, we hold Family Day for family members of our employees to visit the workplace.

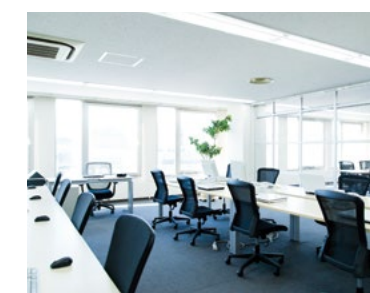


Exhibit using thermal paper by modern artist VIKI



TSUNAGU Gallery

At the ground floor entrance to our head office, we have a gallery for our business partners and members of the local community to peruse at their leisure.



Efforts to Achieve the Sustainable Development Goals (SDGs*)

Since 2018, the KPP Group has been involved in efforts to help identify and achieve Sustainable Development Goals (SDGs) with a high degree of relevance to our business.

* Targets (Sustainable Development Goals) adopted at the September 2015 UN Summit meant to be taken up by the whole world by 2030.



Global Reach

Ever since its start in business in 1924, the KPP Group has continued to expand into new business fields around the world. Today, the Group has 100 consolidated subsidiaries. As a leading company in the paper distribution industry, we will continue working to make the most of group synergies by further strengthening global collaboration.

No. of domestic consolidated companies:

8

No. of consolidated companies overseas:

92 in 45 countries and regions

No. of consolidated employees:

5,530

* KPP fiscal year, as of the end of March of 2021

List of Major Business Base

JAPAN		
Domestic	Tokyo	Daidou Paper Trading Co., Ltd.
	Tokyo	Green Sanai Co., Ltd.
	Tokyo	KPP Logistics Co.,Ltd.
	Tokyo	ANTALIS JAPAN CO LTD
	Yokohama	Kikyoya Kami-shoji Co.,Ltd.
	Saitama	Musashino Paper Recycling Co., Ltd.
	Sendai	Narumiya Kami-shoji Co., Ltd.
	Okayama	Okayama Kami-shoji Co., Ltd.
	Fukuoka	Kyushu Kami-shoji Co., Ltd.

ASIA		
China	Shanghai	Keishin Papers Trade (Shanghai) Co., LTD.
	Shanghai	ANTALIS (SHANGHAI) TRADING CO. LIMITED
Hong Kong	Hong Kong	DaiEi Papers (H.K.) Limited
	Kowloon	ANTALIS (HONG KONG) LIMITED
India	Bengaluru	DAIEI PAPERS TRADING INDIA PRIVATE LTD
Korea	Seoul	DaiEi Papers Korea Company Limited
Malaysia	Kuala Lumpur	DAIEI PAPERS (M) SDN. BHD.
	Selangor	ANTALIS (MALAYSIA) SDN BHD
Singapore	Singapore	DAIEI PAPERS (S) PTE LTD
	Singapore	KPP ASIA-PACIFIC PTE. LTD.
	Singapore	ANTALIS ASIA PACIFIC PTE LTD

	Singapore	ANTALIS (SINGAPORE) PTE LTD
Indonesia	Jakarta	DAIEI PAPERS (S) PTE LTD
Philippines	Manila	DAIEI PAPERS (S) PTE LTD
Thailand	Bangkok	DAIEI PAPERS (THAILAND) Co., LTD.
	Bangkok	ANTALIS (THAILAND) LIMITED
Viet Nam	Ho Chi Minh	DAIEI PAPERS (S) PTE LTD

SOUTH AND NORTH AMERICA		
America	Los Angeles	DaiEi Papers (USA) Corp.
Bolivia	La Paz	ANTALIS BOLIVIA SRL
Brazil	São Paulo	ANTALIS DO BRASIL PRODUTOS PARA A INDUSTRIA GRAFICA LTDA
Chile	Santiago	ANTALIS ABITEK SPA
	Santiago	ANTALIS CHILE SPA
	Santiago	ANTALIS IQUIQUE SA
Peru	Lima	ANTALIS PERU SA
	Lima	TFM INDUSTRIAL SA

MIDDLE EAST		
Turkey	Istanbul	SIMGE ANTALIS KAGIT SANAYI VE TICARET A.S.

OCEANIA		
Australia	Melbourne	DAIEI AUSTRALASIA PTY LTD

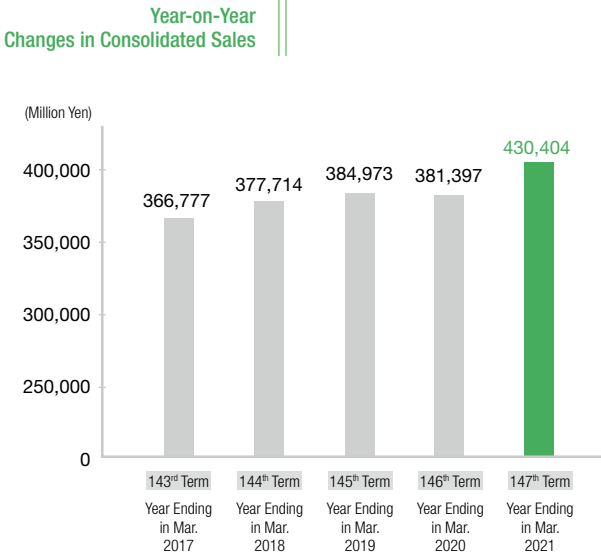
	Melbourne	Spicers Limited
	Melbourne	Spicers Australia Pty Ltd
	Adelaide	Spicers
	Brisbane	Spicers
	Darwin	Spicers
	Hobart	Spicers
	Perth	Spicers
	Sydney	Spicers
	Townsville	Spicers
	Melbourne	PaperlinX Services Pty Ltd
	Melbourne	Rojo Pacific Pty Ltd
New Zealand	Auckland	Spicers (N.Z.) Ltd
	Christchurch	Spicers
	Wellington	Spicers
	Auckland	Total Supply Limited

EUROPE		
Austria	Vienna	ANTALIS AUSTRIA GMBH
	Bergheim bei Salzburg	ANTALIS VERPACKUNGEN GMBH
Belgium	Brussels	ANTALIS NV/SA
Bulgaria	Sofia	ANTALIS BULGARIA EOOD
Czech Republic	Prague	ANTALIS SRO
Denmark	Valby	ANTALIS A/S

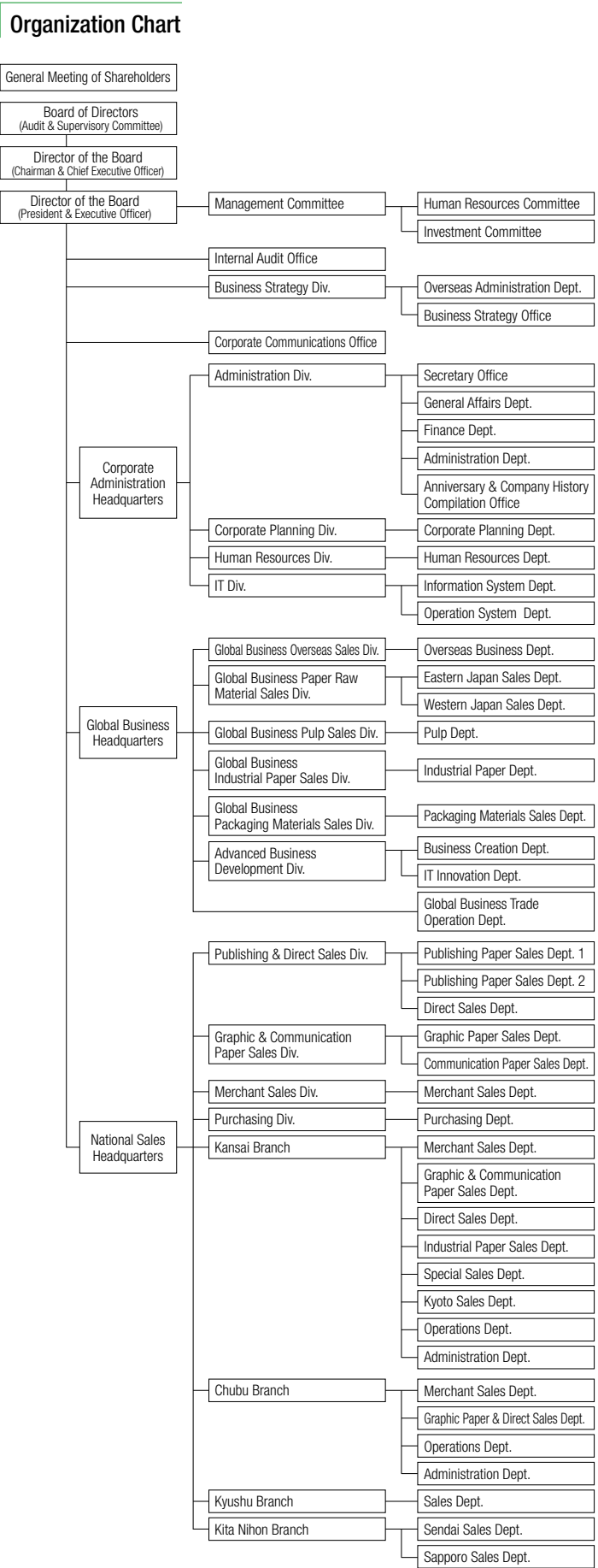
Estonia	Tännassilma	ANTALIS AS
Finland	Vantaa	ANTALIS OY
France	Paris	ANTALIS FRANCE
Germany	Frechen	ANTALIS GMBH
	Leinfelden-Echterdingen	ANTALIS VERPACKUNGEN GMBH
	Frechen	ANTALIS MACRON GMBH
Hungary	Szolnok	ANTALIS HUNGARY KFT
Ireland	Dublin	ANTALIS LIMITED
Italy	Lainate	ANTALIS PACKAGING ITALIA SRL
Latvia	Stopinu novads	AS ANTALIS
Lithuania	Vilnius	UAB ANTALIS
Netherlands	Almere	ANTALIS BV
Norway	Oslo	ANTALIS A/S
Poland	Warsaw	ANTALIS POLAND SPOLKA ZOO
Portugal	Porto	ANTALIS PORTUGAL S.A
Romania	Bucharest	ANTALIS SA
Russia	Moscow	OOO MAP MERCHANT
Slovakia	Bratislava	ANTALIS, AS
Spain	Madrid	ANTALIS IBERIA SA
Sweden	Haninge	ANTALIS AB
Switzerland	Lupfig	ANTALIS AG
United Kingdom	London	ANTALIS LIMITED

Trade Name	KOKUSAI PULP & PAPER CO., LTD.
Date of Establishment	November 27, 1924
Representative	Madoka Tanabe Director of the Board Chairman & Chief Executive Officer Tadashi Kurihara Director of the Board President & Executive Officer
Capital	JPY ¥4,723.53 million
Annual Sales	JPY ¥430,400 million (As of the end of March of 2021) *consolidated
No. of Employees	5,530 (As of the end of March of 2021) *consolidated
Objectives of Business	<div>- Purchase, sales, import and export of paper and paper processed goods</div> <div>- Purchase, sales, import and export of pulp and recovered paper</div> <div>- Purchase, sales, import and export of chemical products, industrial chemicals, horticultural chemicals, paper-related machinery, packaging equipment, industrial electrical equipment, transportation equipment, electrical components, office equipment, construction materials, packing and packaging materials, printing-related supplies, miscellaneous daily necessities, sanitary and medical materials, fuel for paper mill boilers, industrial products for the manufacture of paper/paper products, and biomass fuels</div> <div>- Buying and selling business of used materials and articles</div> <div>- Collection, transport and processing/disposal of industrial and general waste</div> <div>- Wholesaling, brokerage, agency service, leasing and processing related to the previously enumerated categories</div> <div>- Processing, purchase, sales, import and export of food items</div> <div>- Holding, leasing, purchase, sales, management and brokerage of real estate</div> <div>- Contracting of construction work</div> <div>- Supervision of construction and design of architectural structures</div> <div>- Warehousing</div> <div>- Agency service related to property insurance</div> <div>- Owning of and investments in securities</div> <div>- Any and all business ancillary to the previously enumerated categories</div>

Status of Shares *As of the end of March of 2021	
Total Number of Authorized Shares	267,500,000
Total Number of Issued Shares	75,077,406
Shareholders	Oji Holdings Corporation Nippon Paper Industries Co., Ltd. Mizuho Bank, Ltd. KPP Employee Stock Ownership The Master Trust Bank of Japan, Ltd. (Trust Account) MUFG Bank, Ltd. Sumitomo Mitsui Banking Corporation The Norinchukin Bank
Main Banks	Mizuho Bank, Ltd. MUFG Bank, Ltd. Sumitomo Mitsui Banking Corporation The Norinchukin Bank



List of Directors	
Director of the Board Chairman & Chief Executive Officer	Madoka Tanabe
Director of the Board President & Executive Officer	Tadashi Kurihara
Director of the Board Managing Executive Officer	Makoto Ikuta
Director of the Board Managing Executive Officer	Haruyoshi Asada
Director of the Board Managing Executive Officer	Masatoshi Ikeda
Director of the Board *	Tatsushi Yano
Director of the Board *	Mari Sagiya
Member of the Audit and Supervisory Committee	Kazuyuki Takiguchi
Director of the Board Member of the Audit and Supervisory Committee *	Toshiro Kobayashi
Director of the Board Member of the Audit and Supervisory Committee *	Mina Ito
* Independent outside director	
Managing Executive Officer	Tatsuhiko Tachibana
Managing Executive Officer	Yuzo Tomita
Managing Executive Officer	Mitsumasa Muramoto
Managing Executive Officer	Hiroshi Tamai
Managing Executive Officer	Kenichi Kitazumi
Senior Executive Officer	Shoichi Ishii
Senior Executive Officer	Hirohiko Nojiri
Senior Executive Officer	Hideomi Komai
Senior Executive Officer	Yasuyuki Sakata
Executive Officer	Tatsuya Sekine
Executive Officer	Hiroki Shimizu
Executive Officer	Jun Gu
Executive Officer	Kengo Nakazawa
Executive Officer	Seiji Kayashima
Executive Officer	Takeshi Komaba
Executive Officer	Kensuke Yoshida



Domestic Business Bases

Head Office	6-24 Akashi-cho, Chuo-ku, Tokyo, Japan 104-0044 TEL: (81) 3 (3542) 4111 FAX: (81) 3 (3542) 4282		
Kita Nihon Branch	Sento Kaikan Building, 2-2-10 Chuo, Aoba-ku, Sendai-shi, Miyagi, Japan 980-0021 TEL: (81) 22 (266) 2027 FAX: (81) 22 (267) 5273		
	Sapporo Sales Dept. Regent Building, 2-1-5, Kita 2 Jo Nishi, Chuo-ku, Sapporo-shi, Hokkaido, Japan 060-0002 TEL: (81) 11 (241) 2291 FAX: (81) 11 (251) 5726		
	Sendai Sales Dept. Sento Kaikan Building, 2-2-10 Chuo, Aoba-ku, Sendai-shi, Miyagi, Japan 980-0021 TEL: (81) 22 (266) 2027 FAX: (81) 22 (267) 5273		
Chubu Branch	1-11-20 Nishiki, Naka-ku, Nagoya-shi, Aichi, Japan 460-0003 TEL: (81) 52 (201) 6341 FAX: (81) 52 (201) 6358		
Kansai Branch	1-8-6 Azuchimachi, Chuo-ku, Osaka-shi, Osaka, Japan 541-0052 TEL: (81) 6 (6271) 2291 FAX: (81) 6 (6271) 2292		
	Kyushu Branch 2nd Floor Asahi-Life Fukuoka 2nd Building, 5-22 Tenya-machi, Hakata-ku, Fukuoka-shi, Fukuoka, Japan 812-0025 TEL: (81) 92 (291) 8851 FAX: (81) 92 (271) 3117		

Major Related Domestic Corporations

Narumiya Kami-shoji Co., Ltd.	2-14-5 Oroshimachi, Wakabayashi-ku, Sendai-shi, Miyagi, Japan 984-0015 TEL: (81) 22 (235) 2121 FAX: (81) 22 (239) 4161
Daidou Paper Trading Co., Ltd.	12-1 Kikui-cho, Shinjuku-ku, Tokyo, Japan 162-0044 TEL: (81) 3 (3203) 8151 FAX: (81) 3 (3203) 0063
Kikyoya Kami-shoji Co., Ltd.	2-23-8 Sachiura, Kanazawa-ku, Yokohama-shi, Kanagawa, Japan 236-0003 TEL: (81) 45 (784) 1411 FAX: (81) 45 (784) 1419
Okayama Kami-shoji Co., Ltd.	53-1 Tomita, Kita-ku, Okayama-shi, Okayama, Japan 700-0936 TEL: (81) 86 (225) 5151 FAX: (81) 86 (232) 7351
Kyushu Kami-shoji Co., Ltd.	3-2-14 Nishitsukiguma, Hakata-ku, Fukuoka-shi, Fukuoka, Japan 812-0857 TEL: (81) 92 (401) 0010 FAX: (81) 92 (403) 0040
Musashino Paper Recycling Co., Ltd.	404-1 Oaza Shimohiroya, Kawagoe-shi, Saitama, Japan 350-0804 TEL: (81) 49 (239) 3456 FAX: (81) 49 (239) 3455
Green Sanai Co., Ltd.	6-1-1 Morino, Machida-shi, Tokyo, Japan 194-0022 TEL: (81) 42 (728) 9801 FAX: (81) 42 (728) 9802
KPP Logistics Co., Ltd. Toda Office	2-6-6 Bijogikita, Toda-shi, Saitama, Japan 335-0038 TEL: (81) 48 (449) 0064 FAX: (81) 48 (449) 0097

Domestic Related Logistics Facilities

Toda Butsuryu Center	Storage capacity: 7,000t Bijogikita, Toda-shi, Saitama	(Private warehouse)
Kawagoe Butsuryu Center	Storage capacity: 6,000t Minamidai, Kawagoe-shi, Saitama	(Main consignment warehouse)
Nihonkouun Co., Ltd. Shinkiba Warehouse	Storage capacity: 3,000t Shinkiba, Koto-ku, Tokyo	(Tokyo Bay Area consignment warehouse)
MARUTAKE-UNYU Co., Ltd. Shinkiba Logistics Center	Storage capacity: 700t Shinkiba, Koto-ku, Tokyo	(Tokyo Bay Area consignment warehouse)
Itabashi Kami Ryutsu Center	Storage capacity: 15,000t Takashimadaira, Itabashi-ku, Tokyo	(Shared warehouse)
Toda Ryutsu	Storage capacity: 2,000t Bijogikita, Toda-shi, Saitama	(Shared warehouse)
Osaka Kami Kyodo Warehouse	Storage capacity: 25,000t Takaramachi, Higashiosaka-shi, Osaka	(Shared warehouse)
Sendai Higashi Warehouse	Storage capacity: 1,800t Ogimachi, Miyagino-ku, Sendai-shi, Miyagi	(Private warehouse)
Hokkou Yard	Storage capacity: 1,000t Umemachi, Konohana-ku, Osaka-shi, Osaka	(Private warehouse)

Overseas Business Bases (Subsidiaries, Related Corporations, Offices)

DaiEi Papers (USA) Corp. Los Angels Head Office	10900 E. 183rd Street, Suite 241 Cerritos, CA 90703, U.S.A. TEL: 1-714-523-0900 E-Mail: la@daieipapers.com
Keishin Papers Trade (Shanghai) Co., LTD. Shanghai Head Office	Room 2801, New Town Center, 83 LouShanGuan Road, Changning District, Shanghai, 200336 People's Republic of China TEL: 86-21-6275-8111 E-Mail: keishin@keishinpapers.com.cn
DaiEi Papers (H.K.) Limited Hong Kong Head Office	25th Floor, Catic Plaza, 8 Causeway Road, Causeway Bay, HONG KONG TEL: 852-2511-2497 E-Mail: sales@daieihk.com
DaiEi Papers (H.K.) Limited Taipei Office	

DaiEi Papers Korea Company Limited	5th Fl., Myungdang Bldg., Samseong-ro, 100-gil, Gangnam-gu, Seoul, 06166, KOREA TEL: 82-2-563-0052 E-Mail: seoul@daieikr.com
DAIEI PAPERS TRADING INDIA PRIVATE LTD	Office #101, DBS Business Center 26, Cunningham Road, Bengaluru, Karnataka 560052, INDIA TEL: 91-80-4040-7101
DAIEI PAPERS (S) PTE LTD Singapore Head Office	300 Beach Road #17-01/03 The Concourse Singapore 199555 TEL: 65-6417-2333 E-Mail: spore@daiei.com.sg
DAIEI PAPERS (S) PTE LTD Jakarta Office	
DAIEI PAPERS (S) PTE LTD Manila Office	

DAIEI PAPERS (THAILAND) CO., LTD. Bangkok Office	
DAIEI PAPERS (M) SDN. BHD. Kuala Lumpur Office	
DAIEI PAPERS (S) PTE LTD Ho Chi Minh Office	
DAIEI AUSTRALASIA PTY LTD Melbourne Head Office	155 Logis Boulevard, Dandenong South, Victoria 3175, AUSTRALIA (Spicers Australia) E-Mail: melbourne@daieiaust.com.au
Spicers Limited	Spicers Australia Corporate Head Office 155 Logis Boulevard, Dandenong South, Victoria 3175, AUSTRALIA TEL: 61-3-9768-8400 E-Mail: info.mail@spicers.com.au
Spicers New Zealand	New Zealand

* There are more details about overseas business bases in Global Reach (pages 14 – 15).

Antalis S.A.S.	Headquarters 8, rue de Seine, 92100 Boulogne-Billancourt, FRANCE TEL: 33-1-58-04-21-00
Antalis Limited	United Kingdom
Antalis Verpackungen GmbH	Germany
Antalis Poland Spolka z o.o.	Poland
Antalis A/S	Denmark
Antalis AG	Switzerland

(As of end of September 2021)

Eco Press Binder

We propose a new approach to bookbinding with our system that uses neither needles nor glue. Forgoing use of these components also contributes to minimizing the environmental footprint.

* This brochure itself was bound using our Eco Press Binder system.





This paper considers responsibly managed forests.



We use the waterless printing process, which considers water quality control and health damage prevention.



We have adopted a bookbinding method free of wire, paste and heat with consideration to recycling and the risk of injuries.



KOKUSAI PULP&PAPER CO.,LTD.

6-24 Akashi-cho, Chuo-ku, Tokyo, Japan 104-0044
TEL: (81) 03 (3542) 4111 <https://www.kppc.co.jp/>

This brochure has been designed to reduce the environmental load.

* Materials that contribute to the conservation of resources and the environment and to realizing a recycling-oriented society are used to achieve the objectives of the Company.

* Printing process that contributes to reducing the environmental load is used.

202110(1000)E